

ACADEMIC TECHNOLOGY SUPPORT



Assessments

Student Quick Start Guide



e LEARNING

ats@etsu.edu | 439-8611

www.etsu.edu/ats

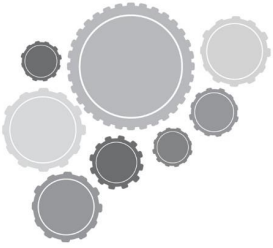
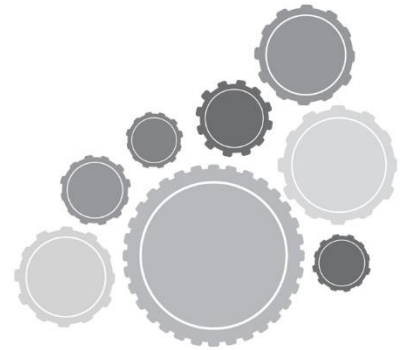


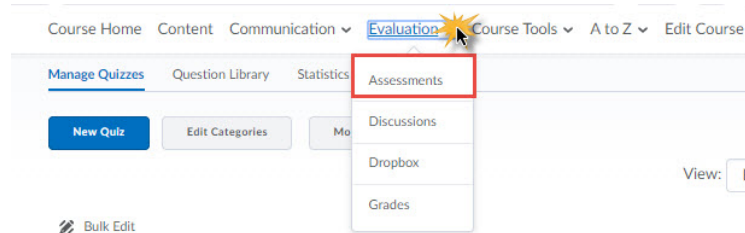
Table of Contents:

Accessing Assessments	1
Navigating the Quiz List.....	1
Taking an Assessment.....	2
Answering Questions	3
Submitting an Assessment.....	4
Viewing Your Quiz Grade and Feedback.....	5
Assessments and Respondus Lockdown Browser.....	6
Quiz Errors.....	7



Accessing Assessments

To access your Assessments in D2L, click on the *Evaluation* link group located in the top navigation bar and select **Assessments** from the drop-down menu.



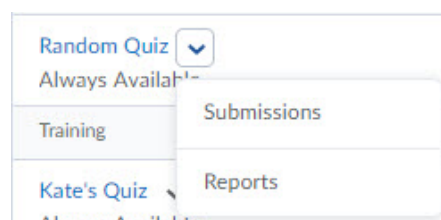
Use the Assessment tool to access quizzes and exams that your instructor makes available to you. This tool also houses your quiz/exam results as well as the ability to view class statistics.

Navigating the Quiz List

Clicking on the Assessment link from the Evaluation drop-down menu will direct you to the Quiz List page. This page holds all quizzes and exams available to you. Use the image and related information to familiarize yourself with the Quiz List page.



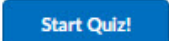
1. **Quiz Availability** – Below each quiz are the dates and times each quiz is available to you. Note that you will not be able to enter an assessment before the start date and time or after the end date and time unless your instructor grants you special access.
2. **Attempts** – The attempts column will display the number of times your instructor will allow you to take a particular quiz as well as the number of attempts you have completed. Note that an asterisk (*) next to your attempt signifies that your attempt has not been submitted. You must submit your attempts before your instructor is able to grade them.
3. **Context Menu** – The context menu is accessed by clicking the downward-facing arrow icon to the right of the quiz name. This submenu contains links to submission information and quiz reports.



- a. *Submissions* – The Submissions page lists each of your attempts for a particular quiz. Depending on the submission view configured by your instructor, you can see your quiz score, quiz questions, the answers you chose, and the correct answers. You are also able to see the score achieved on the quiz.
 - b. *Reports* – The reports page lists all quiz reports for which your instructor has granted access.
-

Taking an Assessment

To begin an assessment, click on the quiz name on the Quiz List page. This hyperlink will bring you to the Quiz Summary page. Be sure to read the information included on this page before you start your quiz. This information includes details about time limits, restrictions, and other instructions related to taking the quiz.

To begin your quiz click  at the bottom of the page.

D2L WILL NOT REGISTER THAT YOU HAVE ATTEMPTED A QUIZ UNTIL YOU CLICK THE BLUE START QUIZ BUTTON. ONCE YOU CLICK THIS BUTTON, THE TIME LIMIT WILL START AND YOU CAN BEGIN ANSWERING THE QUIZ QUESTIONS.

Clicking the blue button labeled “Start Quiz!” will start the quiz timer. The only way to stop the quiz timer is to submit the quiz. **Exiting the browser window will NOT stop or pause the quiz timer.**

After clicking the “Start Quiz!” button you will be taken to the first page of your assessment.

An assessment’s layout is markedly different; it is divided into three distinct sections: Quiz Banner, Questions panel, and the Quiz body.

1. The **Quiz Banner** displays the quiz’s time limit, the time remaining on the attempt, and the attempt number.
2. The **Questions Panel** displays the total number of pages within the quiz and how many questions are on each page. Under each question’s number you will see a small disk icon. A grey icon indicates that your question’s answer has not been saved. A colored icon confirms that the system has saved your question response.

3. The **Quiz Body** is the largest frame, located to the right of the Question panel. You will mark and save your question answers as well as submit your quiz within this section.

Answering Questions

Answer the assessment questions by selecting an answer from the list of options or by typing your answer in the appropriate text box.

Question 2 (1 point) 


How many students attend ETSU?

- Over 100,000 undergraduate, graduate and professional students
- Over 15,000 undergraduate, graduate and professional students
- Over 150,000 undergraduate, graduate and professional students
- Over 50,000 undergraduate, graduate and professional students



Make an answer Selection

Save

Once you have answered a question, by selecting either the appropriate radio button or typing your response into a textbox you will want to save your answer by selecting **Save** or by selecting  , located at the bottom of the page. Clicking the **Save All Responses** button will save all of your answers on the current page.

SAVE YOUR RESPONSES FREQUENTLY. IF YOUR INTERNET CONNECTION DROPS OR IF TIME EXPIRES YOU MAY LOSE ALL UNSAVED RESPONSES.

Your instructor may have chosen to have the quiz questions spread across multiple pages. Click the **Next Page** button to advance to the next page of the quiz. *Some instructors may prohibit you from returning to previous pages of a quiz. Be sure that you have read and understood the information presented on the Quiz Summary page to confirm if you will have the ability to page back during the assessment.*

Submitting an Assessment

Once you have answered all of the questions, or if time has expired, you will need to press the **Go to Submit Quiz** button located at the bottom of the page. Clicking this button will display any

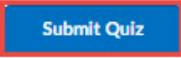
unanswered questions. This will be your final opportunity to revisit the questions you left unanswered before finally submitting the quiz. Click the **Submit Quiz** button when you are ready to submit your assessment attempt.

Quiz Submission Confirmation

You are about to submit your quiz...

To change your response to any question before submission, click on the question number in the **Quiz Info** menu.

Once you press the Submit Quiz button you cannot return to your quiz.

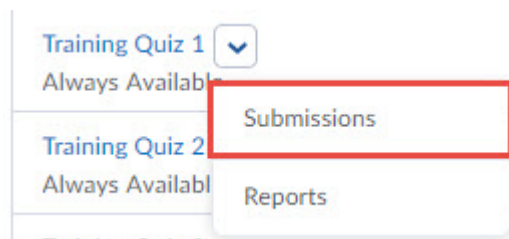
A blue rectangular button with the text "Submit Quiz" in white, outlined in red.

Viewing Your Quiz Grade and Feedback

Submission information allowed by your instructor may be available immediately after submitting your quiz. Many instructors do not release any information until all assessments have been completed. Please check with your instructor if you are not sure what information will be made available to you after your submit a quiz. Essay-type questions will not be automatically graded. Check with your instructor to find when that information might be available. You may return to this information later by selecting the assessment and choosing Submissions.

To view your grade and feedback for a past quiz, follow these steps:

1. Navigate to the Quiz list
2. Select Submissions from the quiz's context menu.



The Submissions page will display your attempts and the score associated with each attempt.

Quiz Submissions - Training Quiz 1 ▾

ATS1 Training (username: ats1)

Individual Attempts	Score
Attempt 1	6.2 / 10 - 62 %
Overall Grade (highest attempt): 6.2 / 10 - 62 %	

Clicking on the [attempt](#) hyperlink will open the submission information for the quiz. Depending on the information released by your instructor you are able to see the quiz questions, your responses, and the correct answers. Additionally, if your instructor chose to include question and quiz feedback, this feedback information will also display.

ETSU Fun Facts Quiz Questions

Question 1 1 / 1 point

East Tennessee State University was founded in 1911 (as East Tennessee State Normal School).

A) True
 B) False

[View Feedback](#) 

Hide Feedback

Correct, ETSU was founded in 1911.

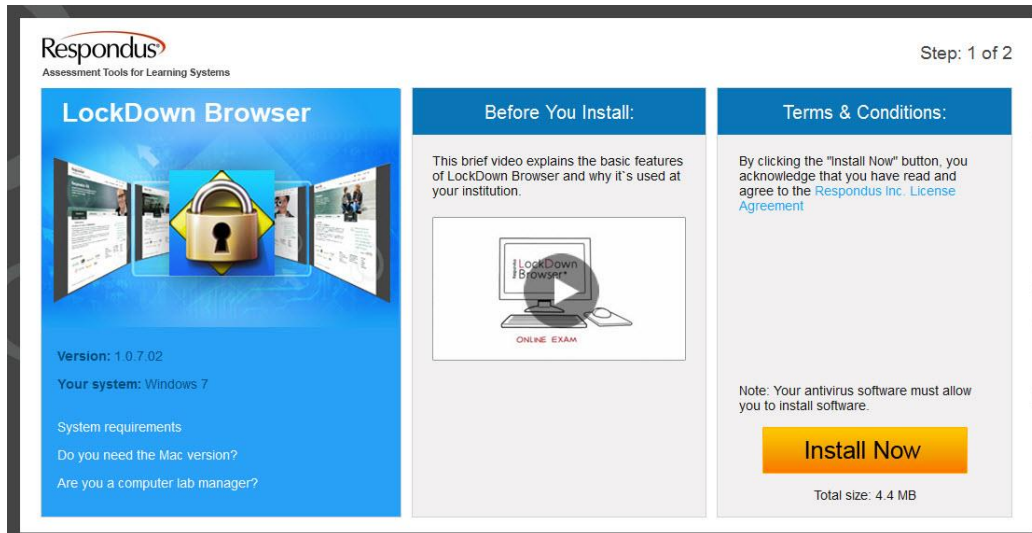
Assessments and Respondus Lockdown Browser

Your instructor may require you to use the Respondus Lockdown Browser to take your exam. Much like Internet Explorer, or Mozilla's Firefox, the Respondus Lockdown Browser is an independent web browser that locks down the testing environment within D2L. While taking a quiz using the Respondus Lockdown Browser you will not be able to print, copy, navigate to another URL, or access other applications. When you begin an assessment, you are locked into that quiz until you submit it for grading.

If your instructor requires the Respondus Lockdown Browser for an assessment D2L will notify you on the Quiz Summary page. A hyperlink to download the browser will display.

Note: To take this quiz you must use the Respondus LockDown Browser
[\[Download Respondus LockDown Browser\]](#)

Simply click on the hyperlink to be redirected to the Respondus downloads website. Confirm your operating system, download, and install the program.



Once the browser has been successfully installed on your computer, click to open the browser. If you're on a Windows-based operating system you will find this program listed on the start menu. The lockdown browser may prompt you to close any open applications before you are able to proceed. Close all open applications, open the browser, navigate to <https://elearn.etsu.edu>, log in to D2L and begin the assessment.

Quiz Errors

Rarely, you may encounter difficulties with the system during an assessment. Any time you experience a computer or internet-related malfunction, simply reopen D2L and attempt to access the assessment again. Oftentimes, reestablishing your internet connection and restarting your web browser resolves the majority of these issues.

When you exit your web browser the quiz timer does NOT stop or pause. Try to access the assessment as quickly as possible to eliminate possibility of time expiring on your quiz.

We have received reports of students being unable to submit an exam. If you should experience this issue, confirm that all of your responses are saved and contact your instructor immediately. Your instructor can then submit the quiz on your behalf.