



## THE ACADEMY

Experience the classroom from the perspective of our students at East Tennessee State University!

The Academy is a private event held exclusively for members of the ETSU Foundation President's Circle. Enjoy the opportunity to learn from top faculty at the university. The day includes registration, classroom experiences, a tour of the Culp Center renovation, and lunch in the new dining hall.

Please register online at [etsualumni.org](http://etsualumni.org). There is a \$30 charge for the event, which includes a continental breakfast, classes, transportation, and lunch. Registration deadline is October 30, 2019.

We look forward to seeing you in class!

If you have questions, please call 423-439-5181.

**“AN INVESTMENT IN  
KNOWLEDGE PAYS THE  
BEST INTEREST.”**

Benjamin Franklin

## THE ACADEMY SCHEDULE

Friday, November 8, 2019

**Registration**  
8:30 - 9 a.m.

**Tour Theatre and Dance Department**  
9:15 - 11:15 a.m.

**Lunch and Tour Culp Center**  
11:30 a.m. - 1 p.m.

**Travel to Gray Fossil Site on Charter  
Bus**  
1 - 1:30 p.m.

**Tour Gray Fossil Site**  
1:30 - 3:30 p.m.

**Return to ETSU**  
4 p.m.

**OFFICE OF  
UNIVERSITY ADVANCEMENT**

P.O. Box 70721  
Johnson City, TN 37614-1710  
423-439-5181

ETSU is an AA/EEO employer. ETSU-ADV-0008-19 1300

## THE ACADEMY

November 8, 2019



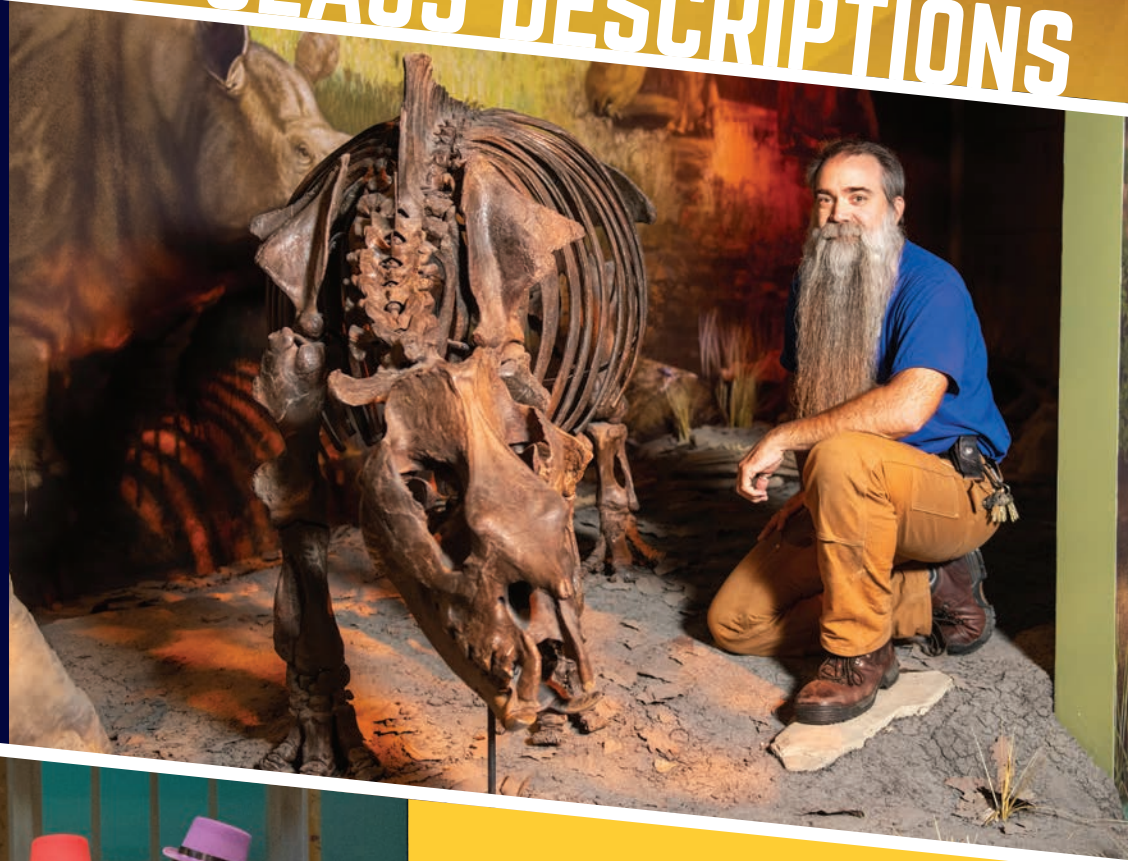
## THE CENTER OF EXCELLENCE IN PALEONTOLOGY

The Center of Excellence in Paleontology and the ETSU Natural History Museum at the Gray Fossil Site are a gateway to the university through recruiting students, educating the public, raising funds, and producing high-quality research. As part of the educational and research enterprise of the College of Arts and Sciences, the center, museum, and fossil site provide accurate and current information about paleontology and natural history research through excavations, discovery, exhibits, and outreach programs.

Formed when an underground limestone cave collapsed and created a sinkhole, this vast fossil deposit includes thousands of plant and animal fossils including: saber tooth cat, alligator, tapir, rhinoceros, short-faced bear, red panda, and a 10-ton mastodon.

The Hands On! Discovery Center is also on-site and is a partner with the museum. During your visit, you will have the opportunity to tour the exhibits, get an up-close view of the dig site and watch paleontologists in the on-site research laboratory as they sort and reconstruct recent fossil finds.

# CLASS DESCRIPTIONS



## DEPARTMENT OF THEATRE AND DANCE

The ETSU Department of Theatre and Dance offers professional training in a liberal arts setting. Undergraduate students are prepared for careers in the performing arts and theatre education. Our diverse faculty and staff are comprised of working professional artists who are dedicated to advancing the discipline, offer instruction in stage and film performance, dramaturgy, design and technology, and unique areas such as Aerial Dance and Entertainment Rigging.

During the Academy, you will have a chance to go behind the scenes of the current production, tour the costume and scene shop, watch a demonstration in the Aerial Dance studio, and talk to teachers and designers about their craft.

