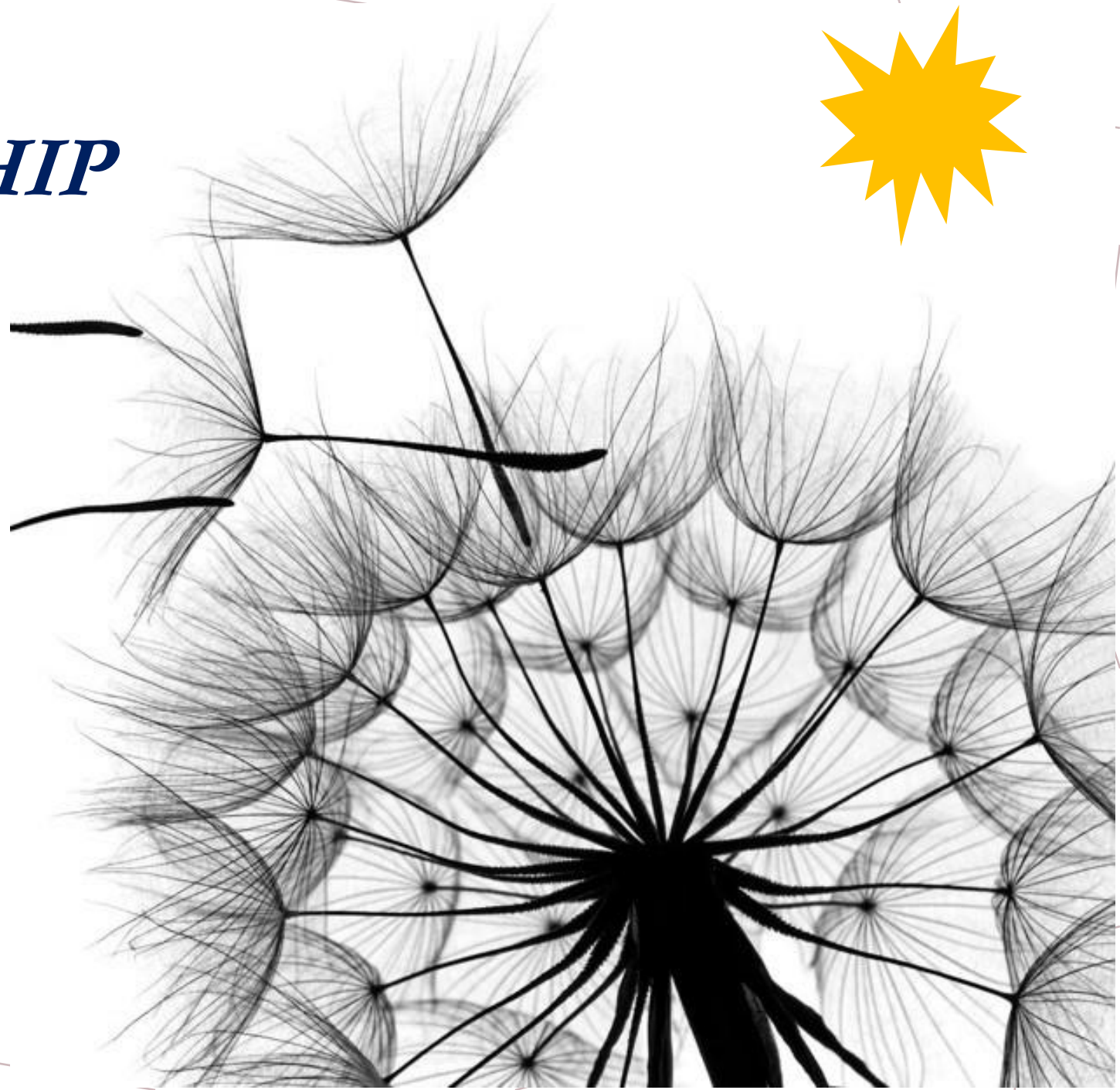


# ***ETSU STEWARDSHIP OF PLACE***

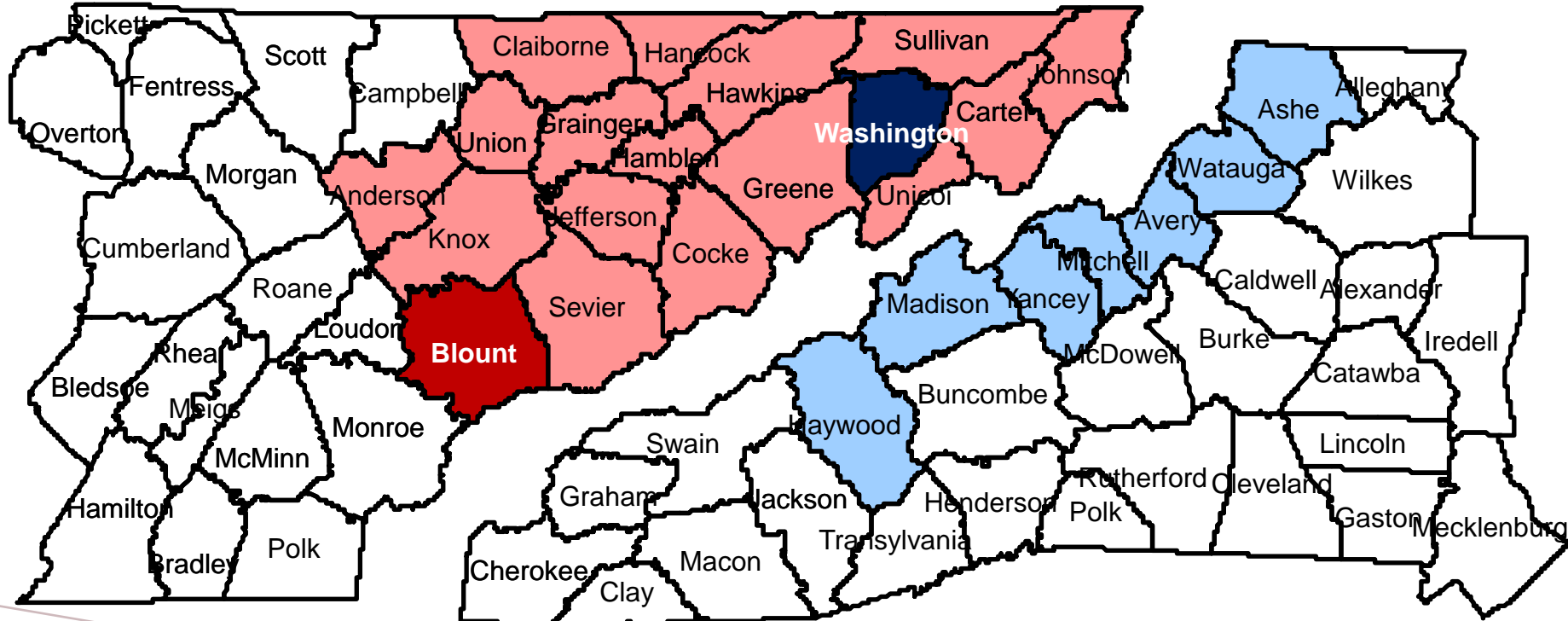
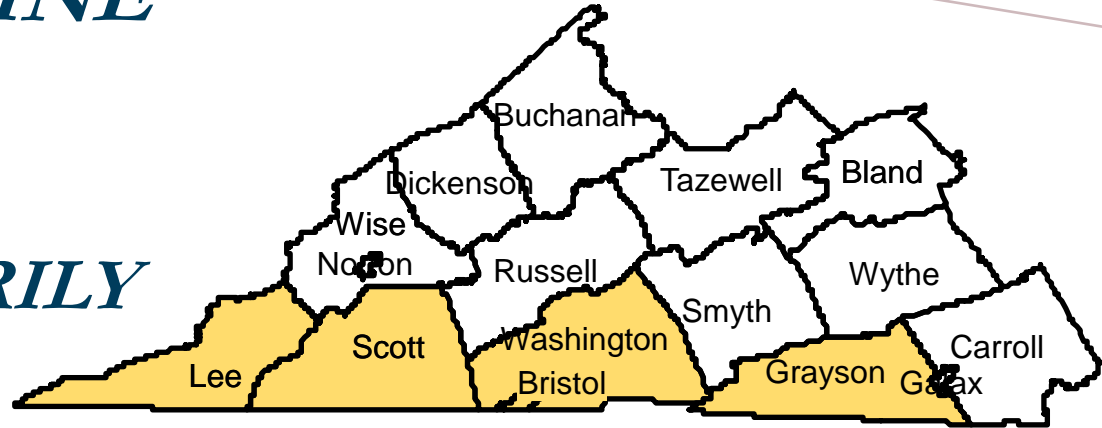
SPOTLIGHT ON  
BLOUNT COUNTY

*May 2021*



# *THE EDUCATION PIPELINE LEADING TO ETSU*

## *REGION-COUNTIES PRIMARILY SERVED*



First-Time Freshmen – 68%

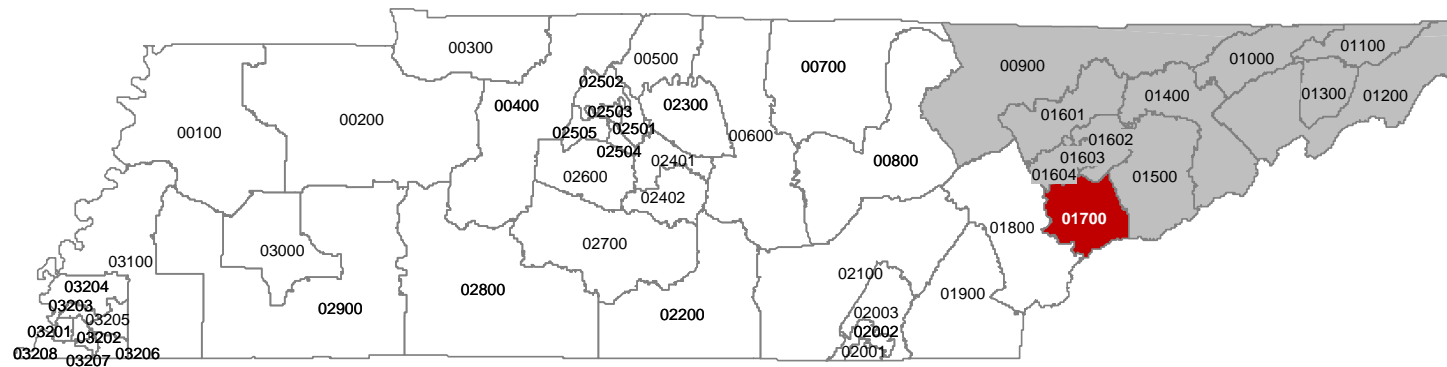
All Undergraduates – 74%



# *Combined Public Use Microdata Areas (PUMAs) for ETSU Region*

## *Lowest Unit of Analysis for Most U.S. Census Bureau Data*

PUMA	County and City
900	Campbell, Claiborne, Scott, Morgan & Hancock Counties
1000	Hawkins & Sullivan (Northwest) Counties--Kingsport City
1100	Sullivan County (Southeast)--Bristol City
1200	Greene, Carter, Unicoi & Johnson Counties
1300	Washington County--Johnson City
1400	Hamblen, Cocke & Grainger Counties
1500	Sevier & Jefferson Counties
1601	Anderson, Union & Knox (North) Counties--Oak Ridge (East) & Clinton Cities
1602	Knox County (East)
1603	Knoxville City
1604	Knox County (West)--Farragut Town
1700	Blount County

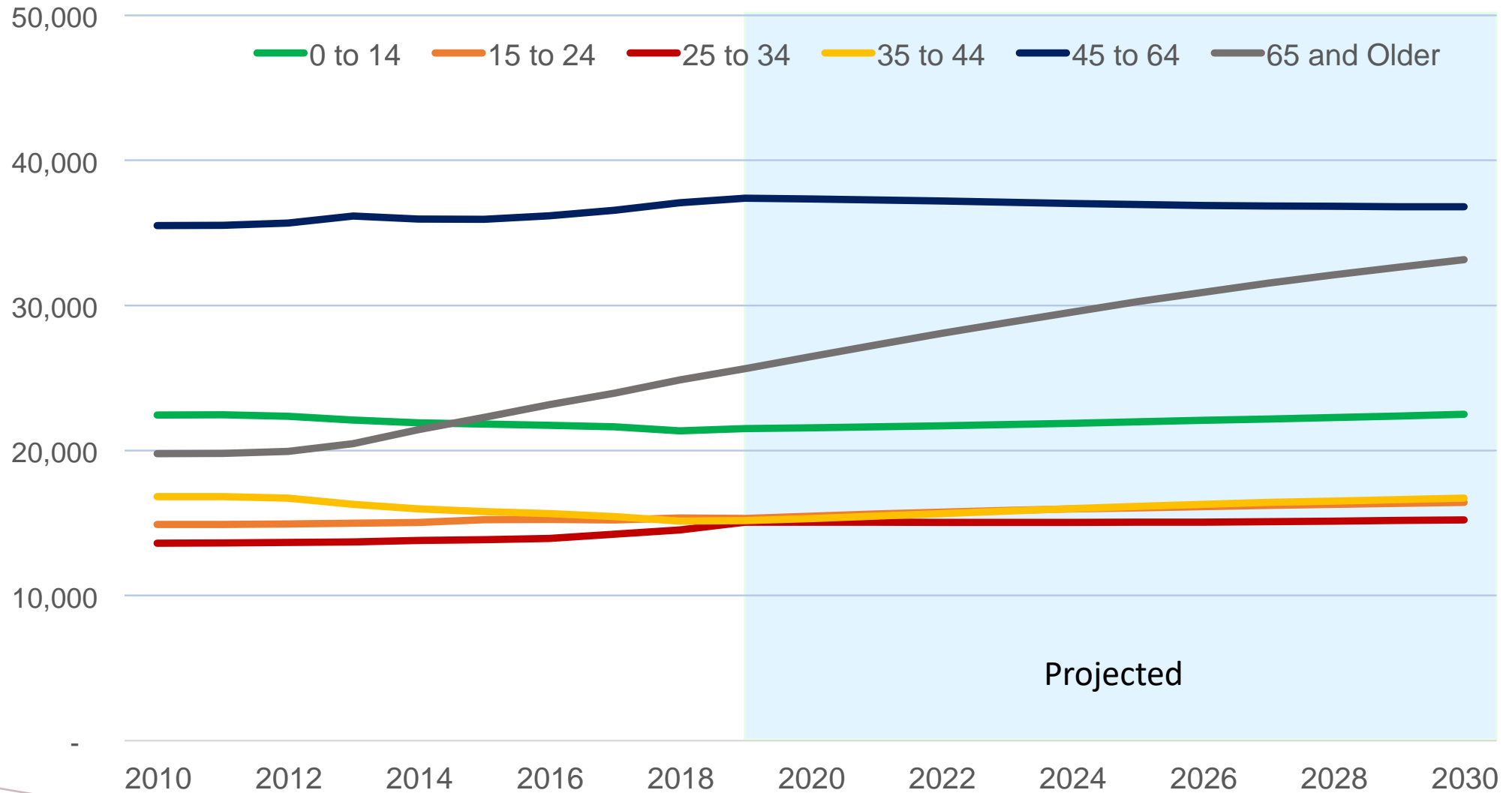


# *POPULATION*

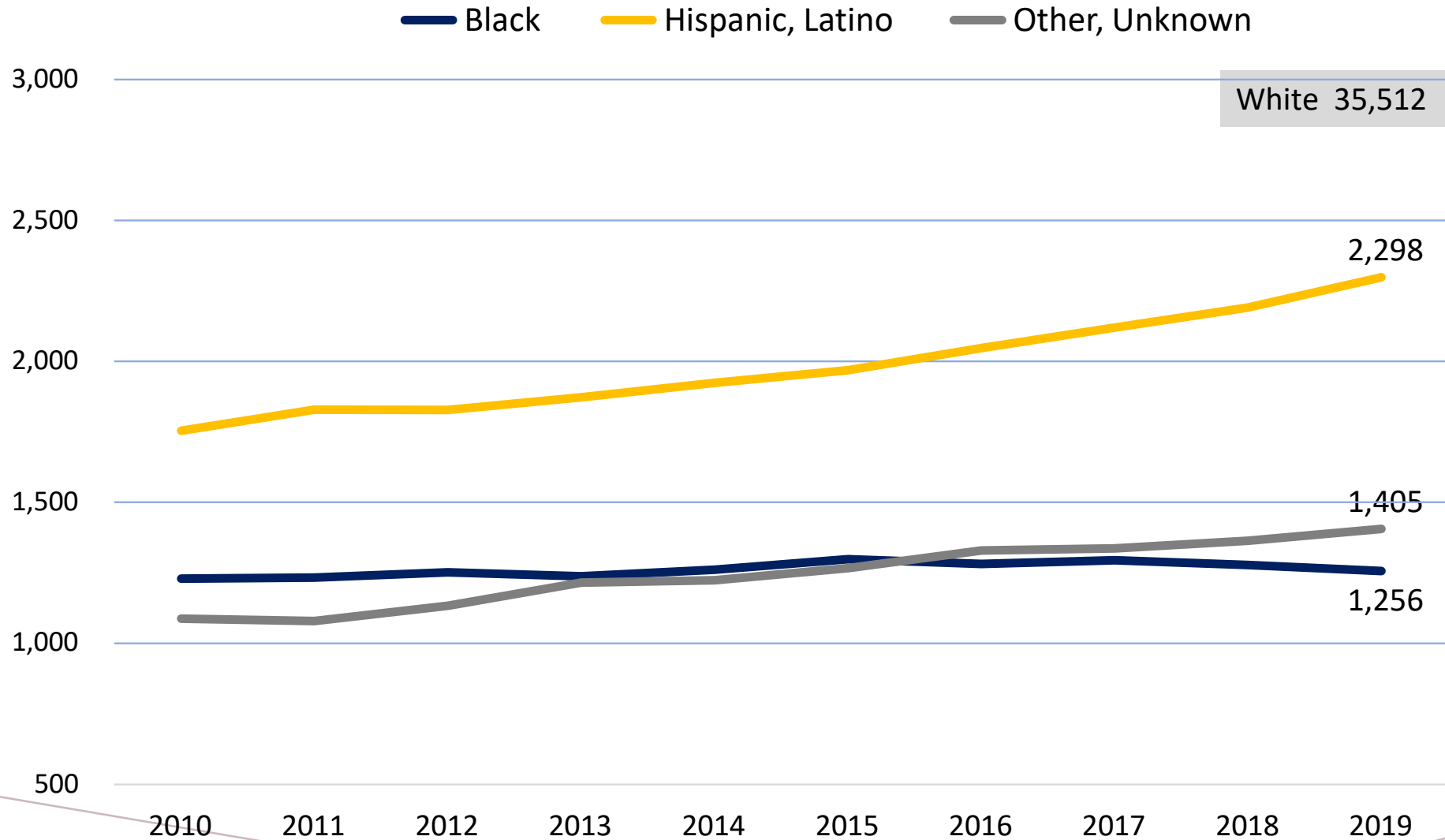


# *POPULATION CHANGE BY AGE-GROUP*

## *BLOUNT COUNTY 2010 TO 2030*

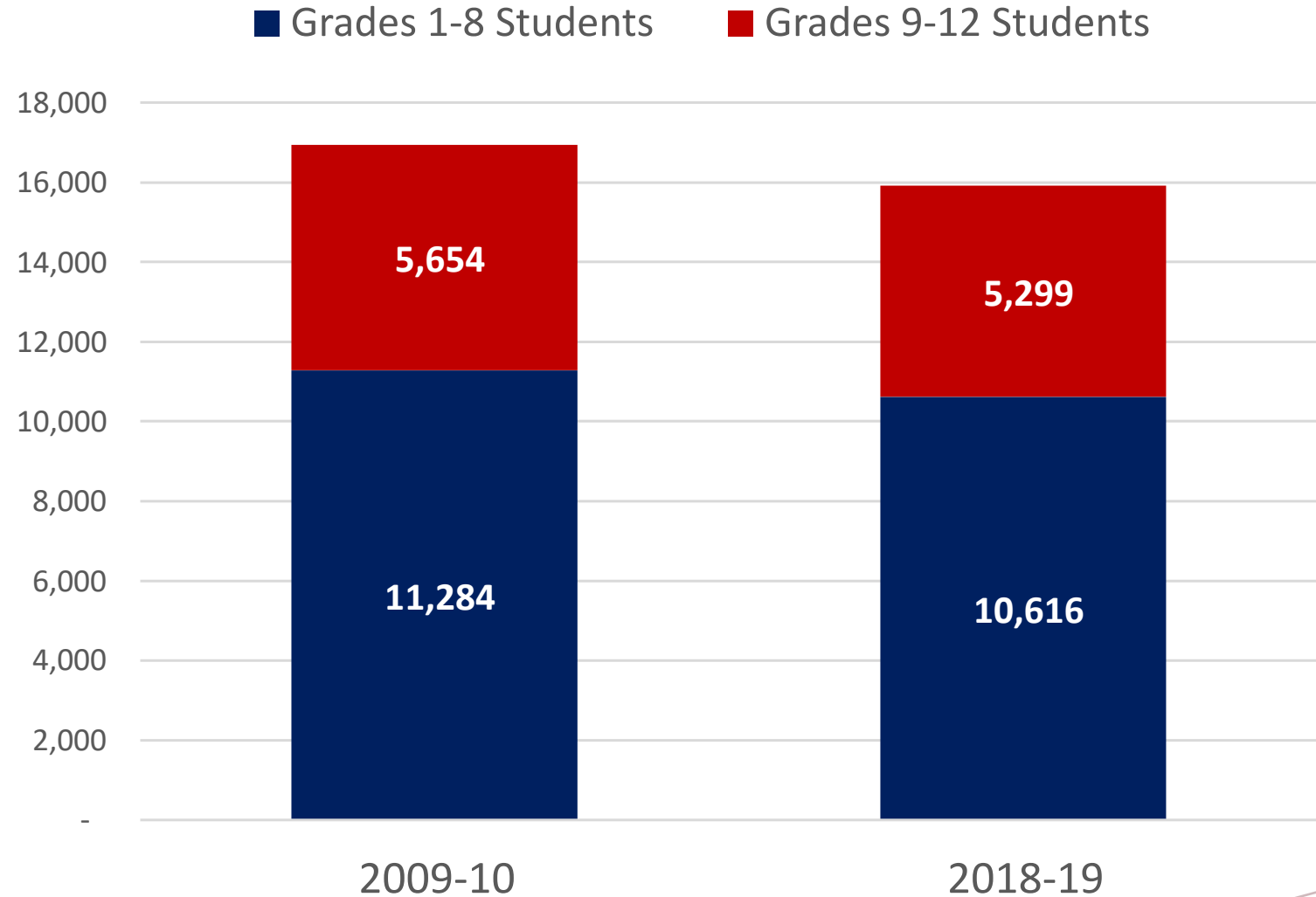


# POPULATION ESTIMATES OF MINORITIES – AGE 0 TO 24 BLOUNT COUNTY (2010 TO 2019)



# CHANGE IN K-12 ENROLLMENT

## *BLOUNT COUNTY 2009-10 TO 2018-19*

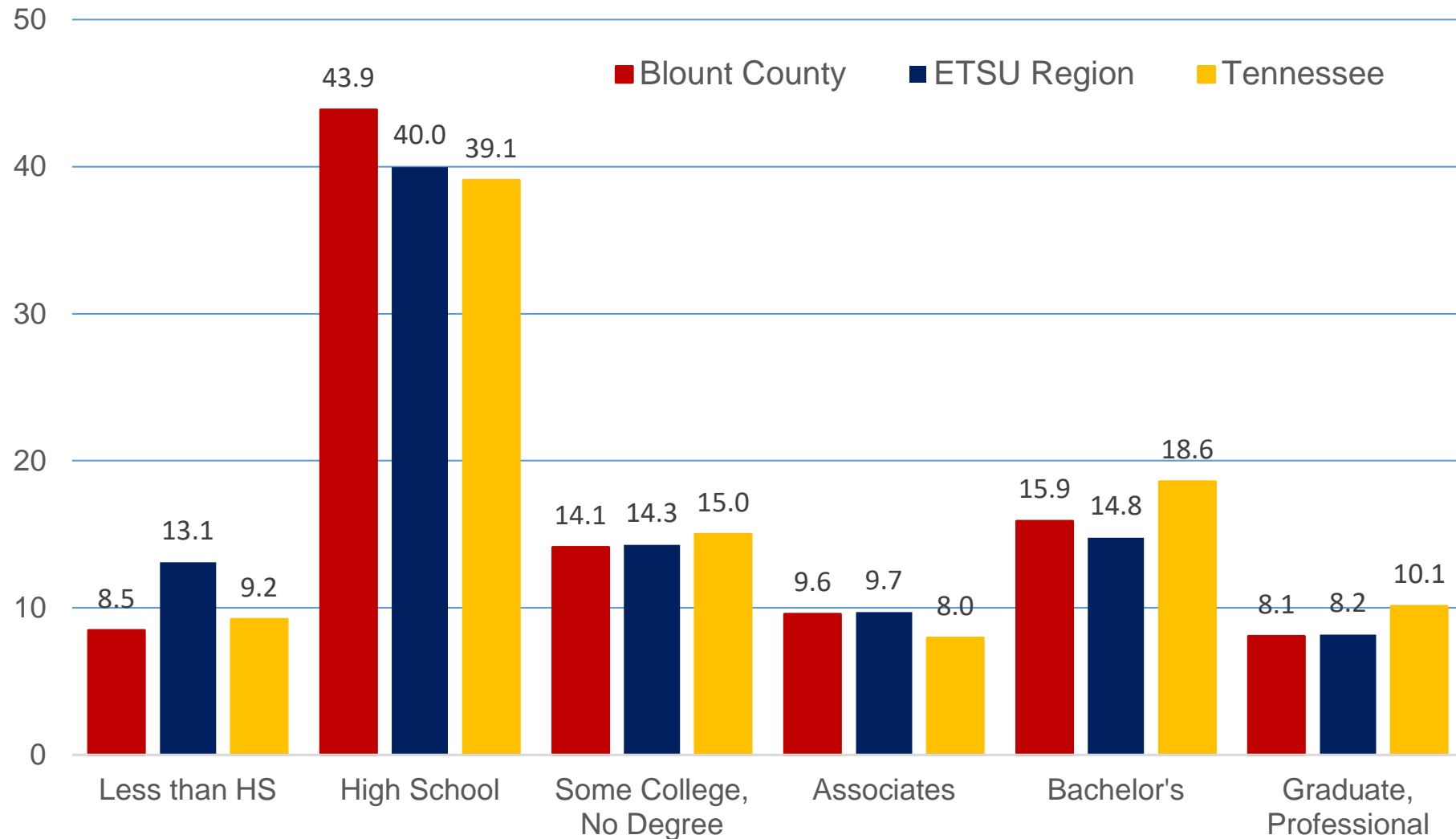


# *EDUCATION*





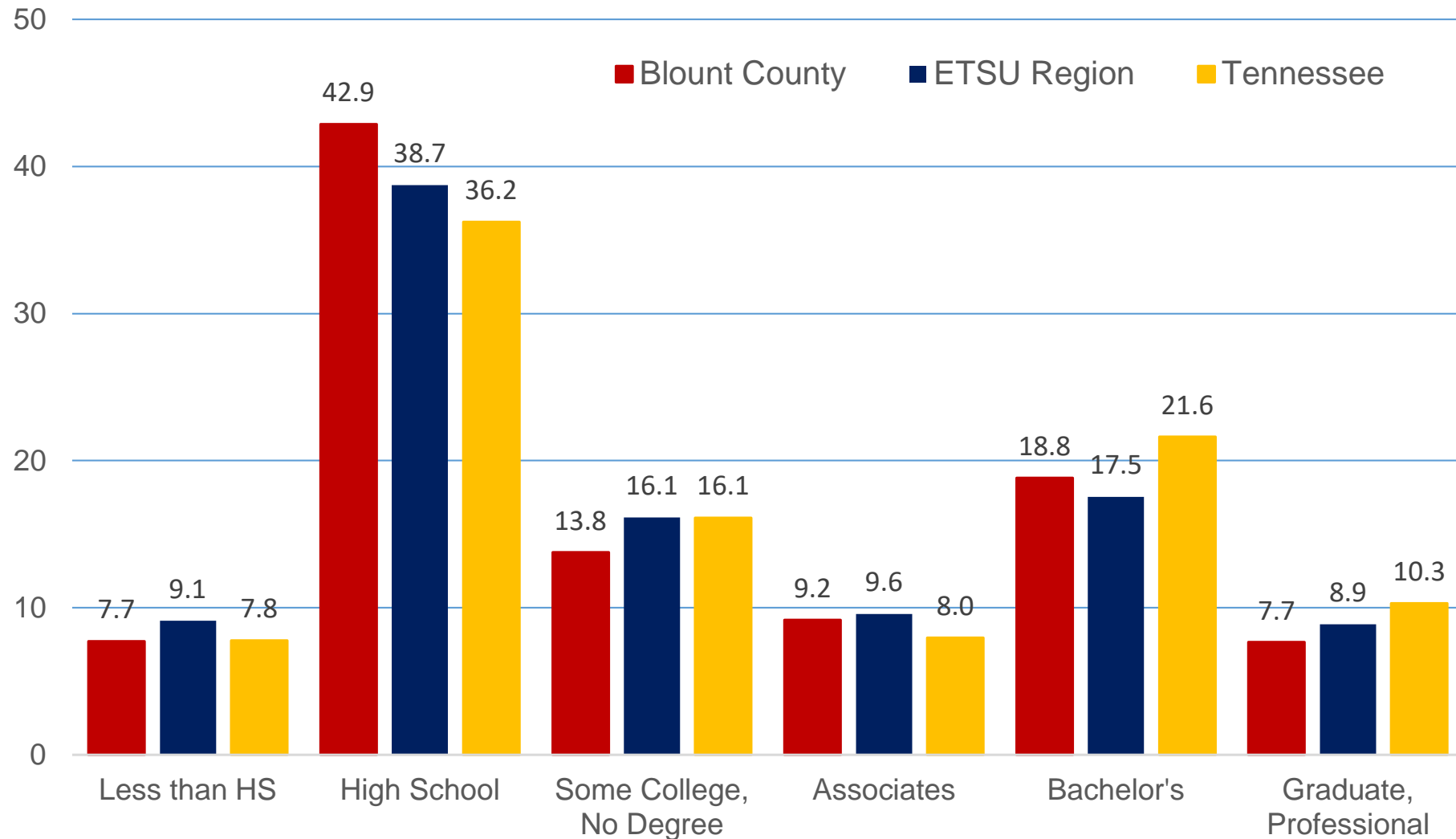
# *EDUCATIONAL ATTAINMENT OF 25 TO 64 YEAR OLD'S BLOUNT COUNTY, ETSU REGION, AND TENNESSEE (2019)*



Source: U.S. Census Bureau, American Community Survey Public Use Microdata Samples



# *EDUCATIONAL ATTAINMENT OF 25 TO 39 YEAR OLD'S BLOUNT COUNTY, ETSU REGION, AND TENNESSEE (2019)*

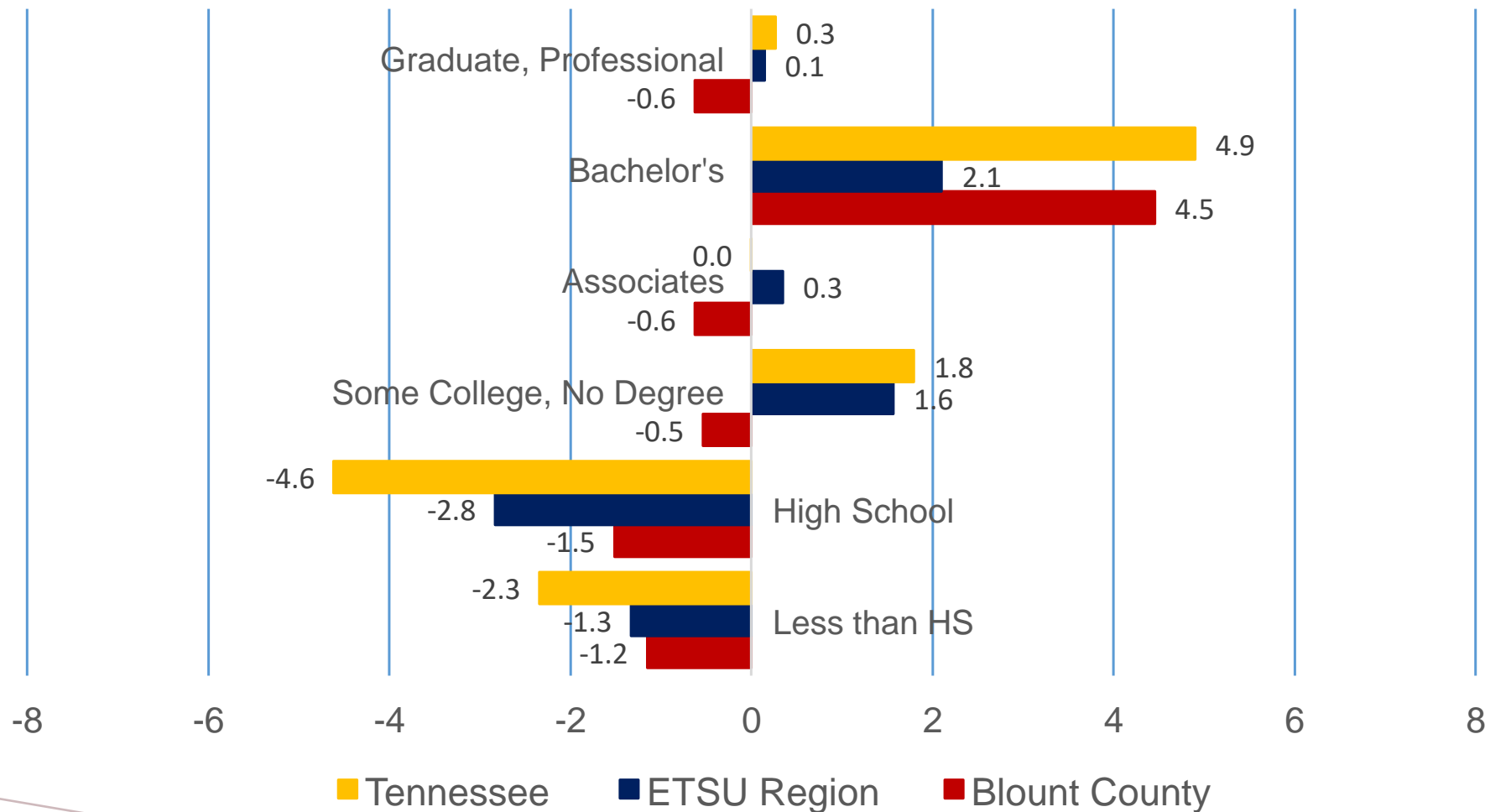


Source: U.S. Census Bureau, American Community Survey Public Use Microdata Samples

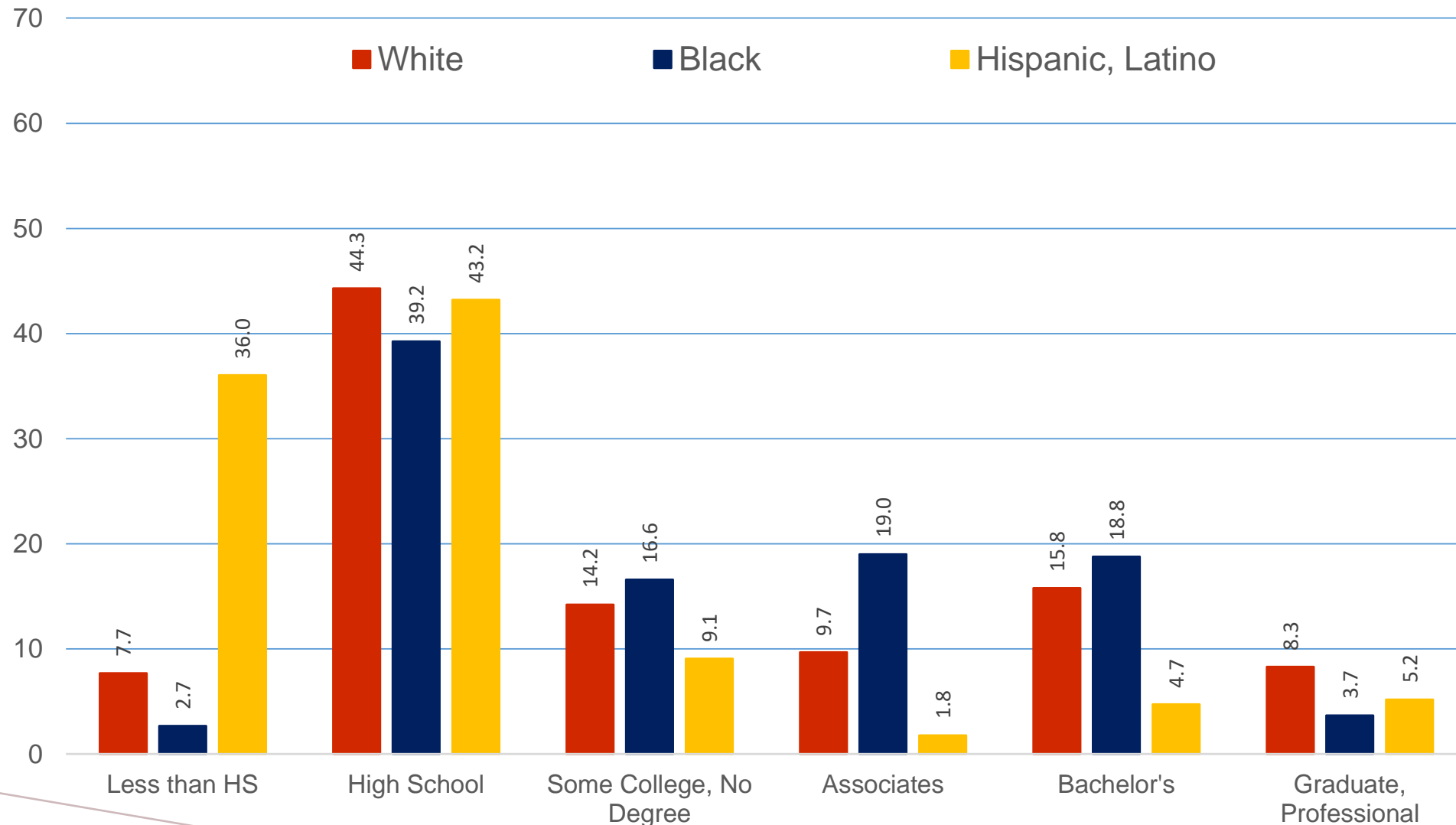


# PERCENTAGE CHANGE IN EDUCATIONAL ATTAINMENT FROM YOUNG (AGED 25 TO 39) TO OLDER (40 TO 64)

*BLOUNT COUNTY, ETSU REGION, AND TENNESSEE (2019)*



# *EDUCATIONAL ATTAINMENT OF 25 TO 64 YEAR OLD'S BY RACE/ETHNICITY – BLOUNT COUNTY (2019)*



Source: U.S. Census Bureau, American Community Survey Public Use Microdata Samples

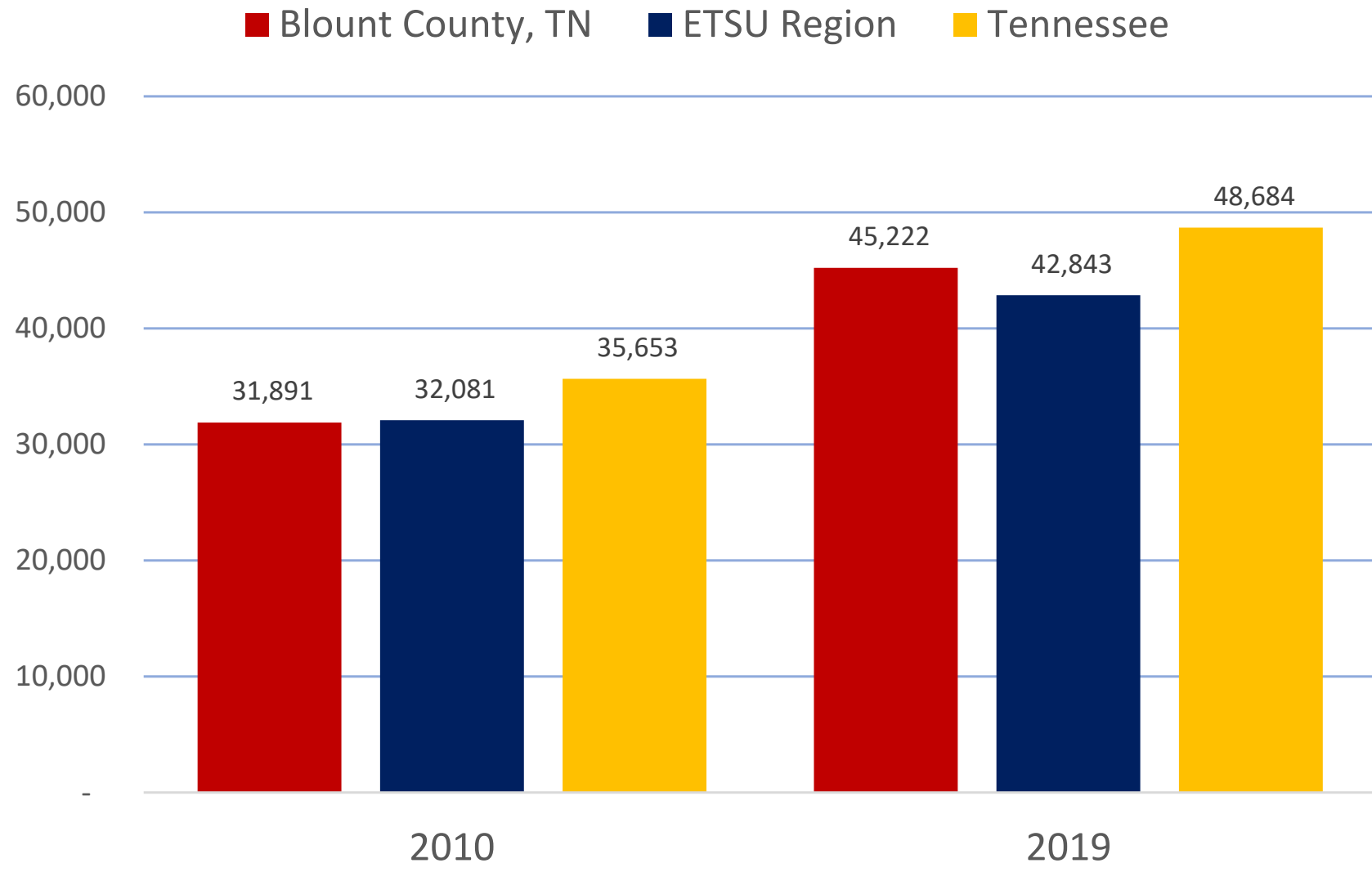


# *EMPLOYMENT AND WORKFORCE*



# *PERSONAL INCOME PER CAPITA*

## *BLOUNT COUNTY, ETSU REGION, AND TENNESSEE*

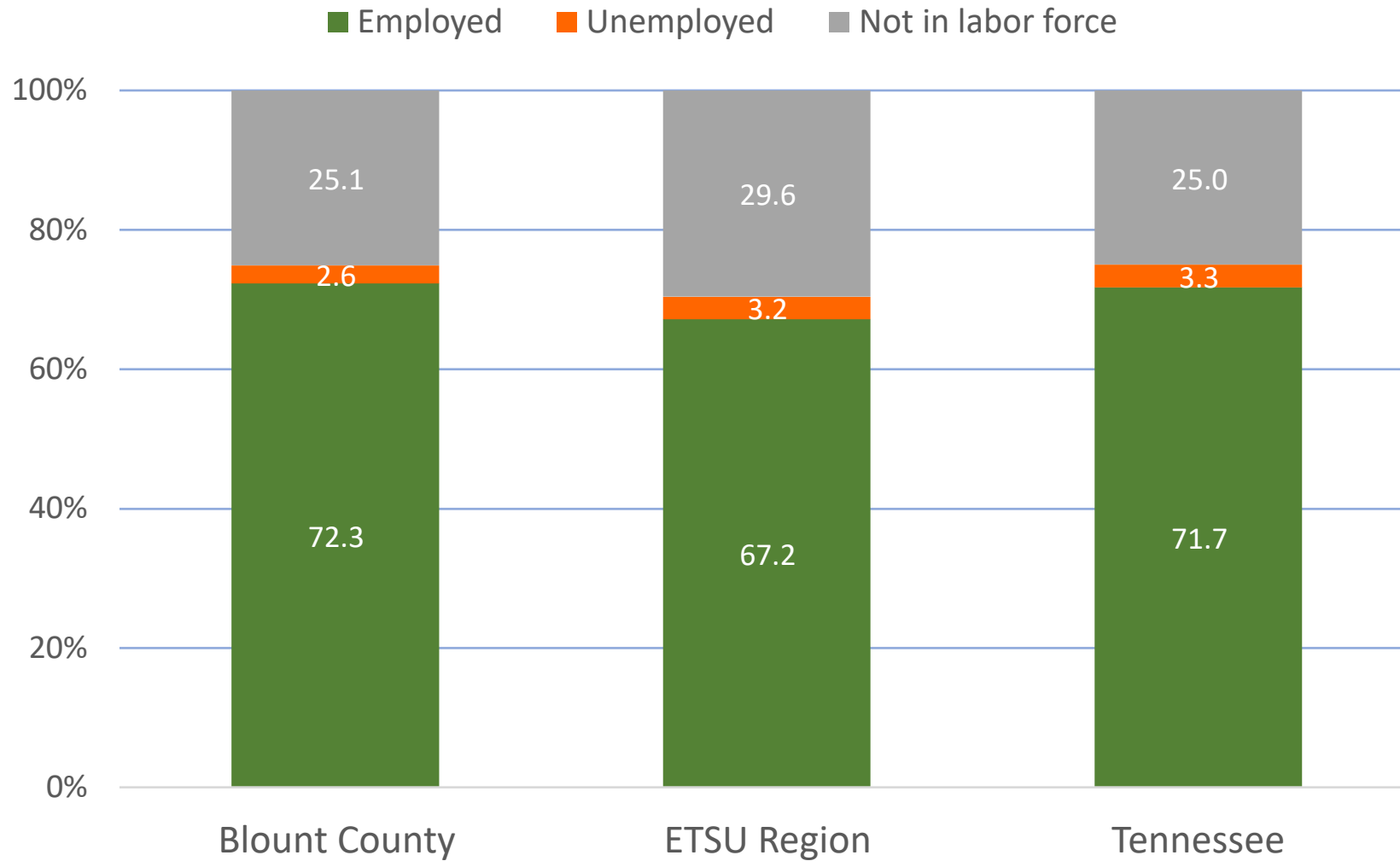


Source: U.S. Bureau of Economic Analysis



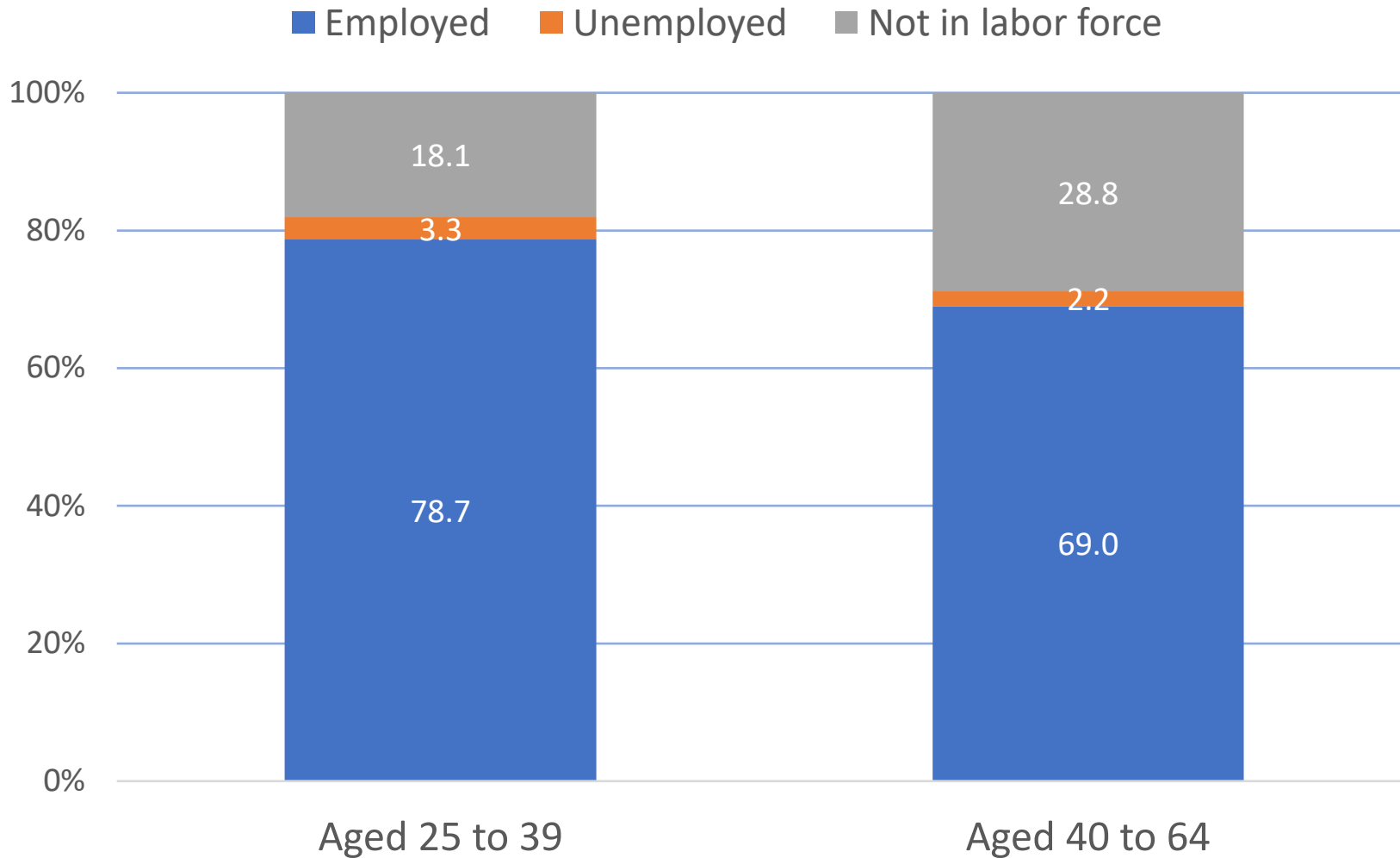
# *EMPLOYMENT STATUS (2019)*

## *BLOUNT COUNTY, ETSU REGION, AND TENNESSEE*



# *EMPLOYMENT STATUS BY AGE-GROUP (2019)*

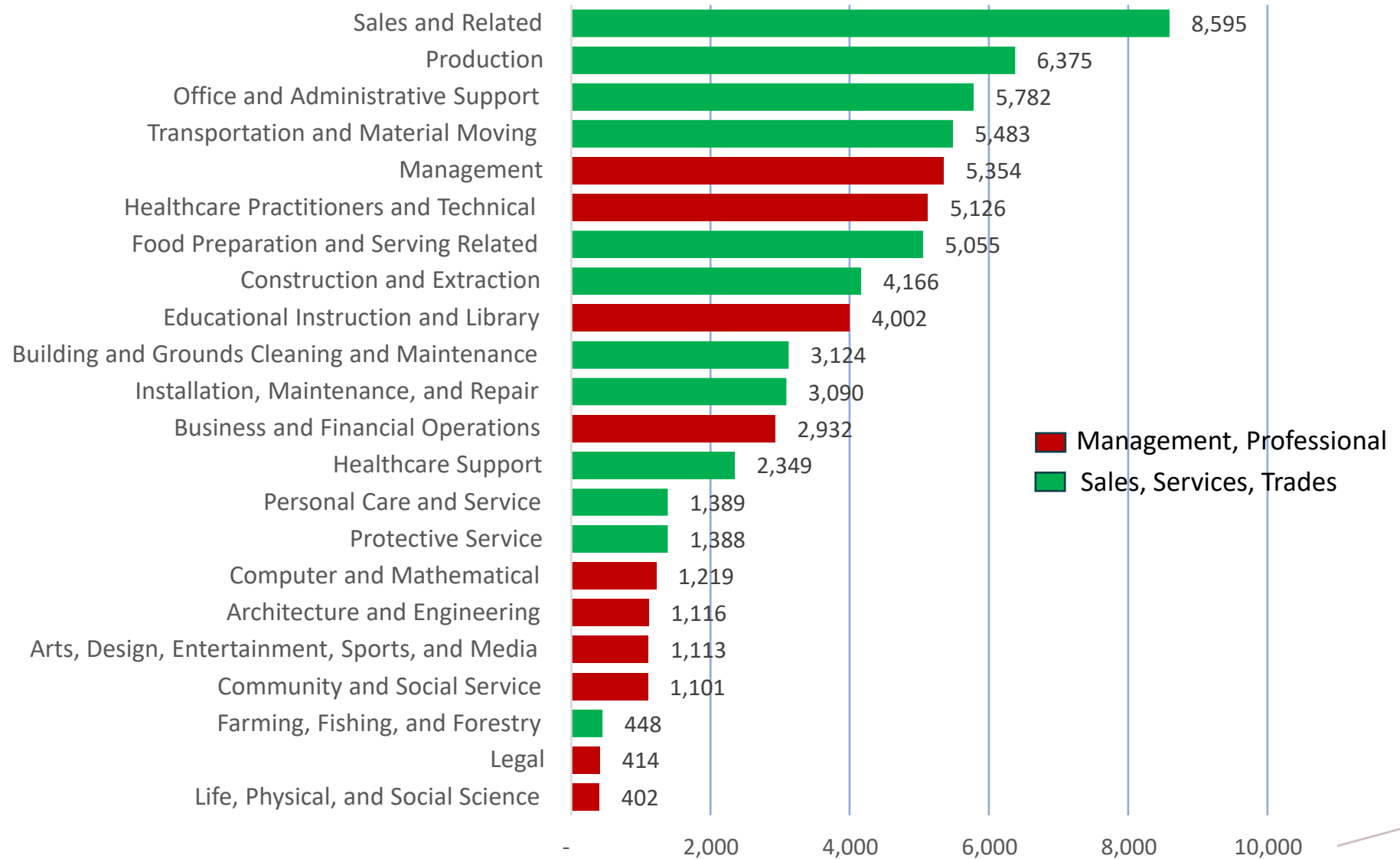
## *BLOUNT COUNTY*





# ***OCCUPATIONS OF 25 TO 64 YEAR OLD'S***

## ***BLOUNT COUNTY (2019)***



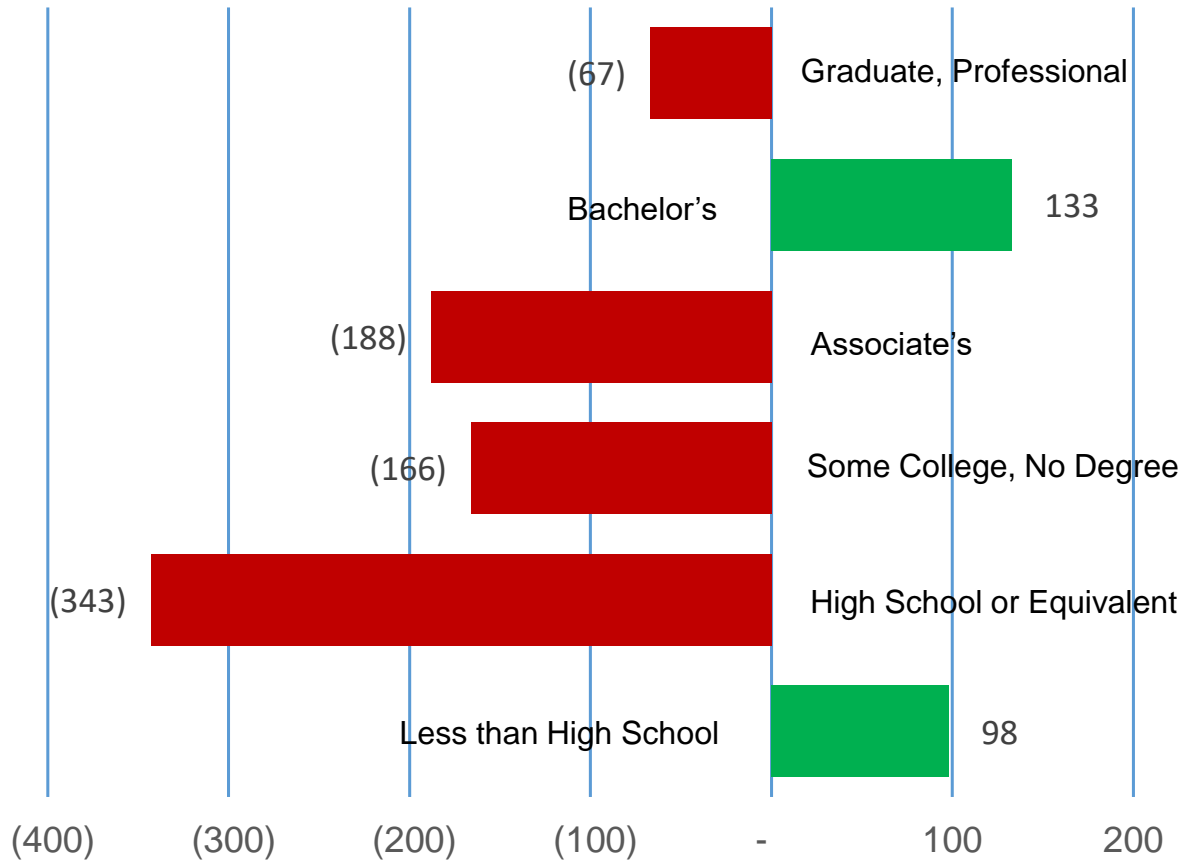
Source: U.S. Census Bureau, American Community Survey Public Use Microdata Samples



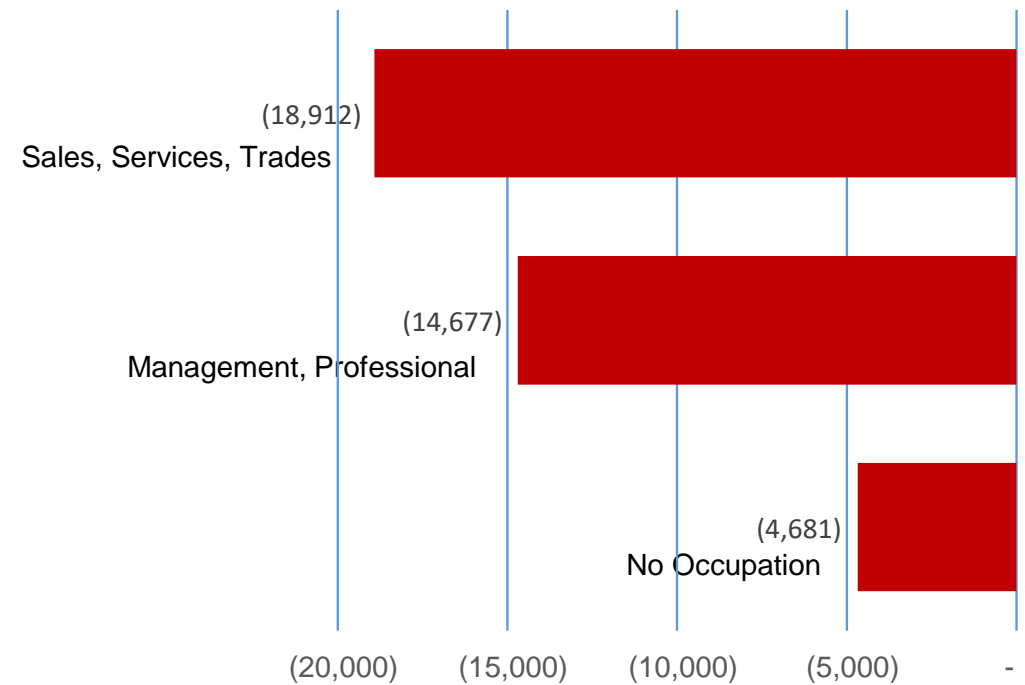
# ANNUAL NET MIGRATION OF 25 TO 64 YEAR OLDS

## BLOUNT COUNTY, TN (2015-2019)

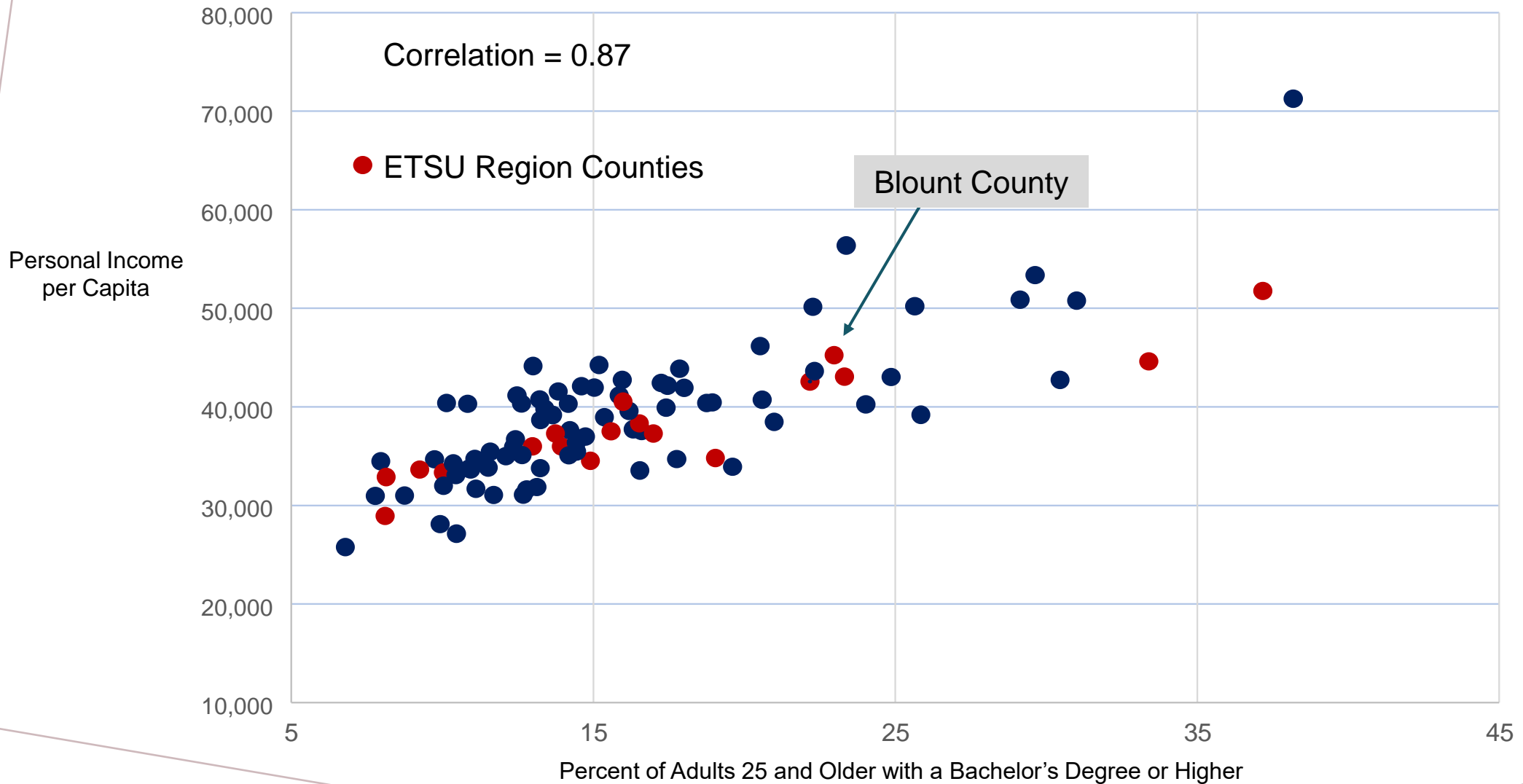
### By Level of Education



### By Occupation



# RELATIONSHIP BETWEEN COLLEGE ATTAINMENT AND PERSONAL INCOME – TN COUNTIES (2019)



Source: U.S. Bureau of Economic Analysis, U.S. Census Bureau – American Community Survey

